

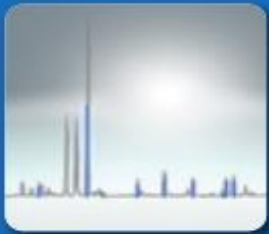


D8 ADVANCE

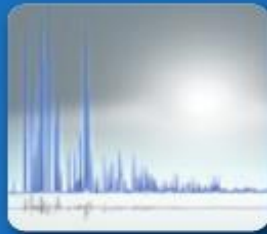
X- Ray Diffractometer (XRD)

- High temperature XRD (upto 1600°C)
- Grazing Incidence XRD (GIXRD)
- Low Angle XRD
- Phase Identification/Quantification
- Structure Refinement
- Microstructure
- Indexing

Application



Qualitative &
quantitative phase
analysis



Structural analysis

Technical details

Max. usable angular range = $2\theta \leq 168^\circ$

Smallest addressable increment = 0.0001°

Max. angular speed = $20^\circ/s$

Non-Ambient Conditions (High Temperature)

Cu anode with 3kW Generator

Twin-Twin Optics (Motorized slit and Göbel Mirror)

LYNXEYE Family Detector (0D and 1D mode)

Charges

*Kindly do refer the external form for further charge details.



Contact:

Prof. H. Shankar

Head, Advanced Materials Characterization Centre,

Centre for Research and Development,

KPR Institute of Engineering and Technology

Arasur, Coimbatore – 641407

E-mail: shankar.h@kpriet.ac.in / xrd@kpriet.ac.in

Mobile No: +91 7448727596

Landline: 0422 2635653